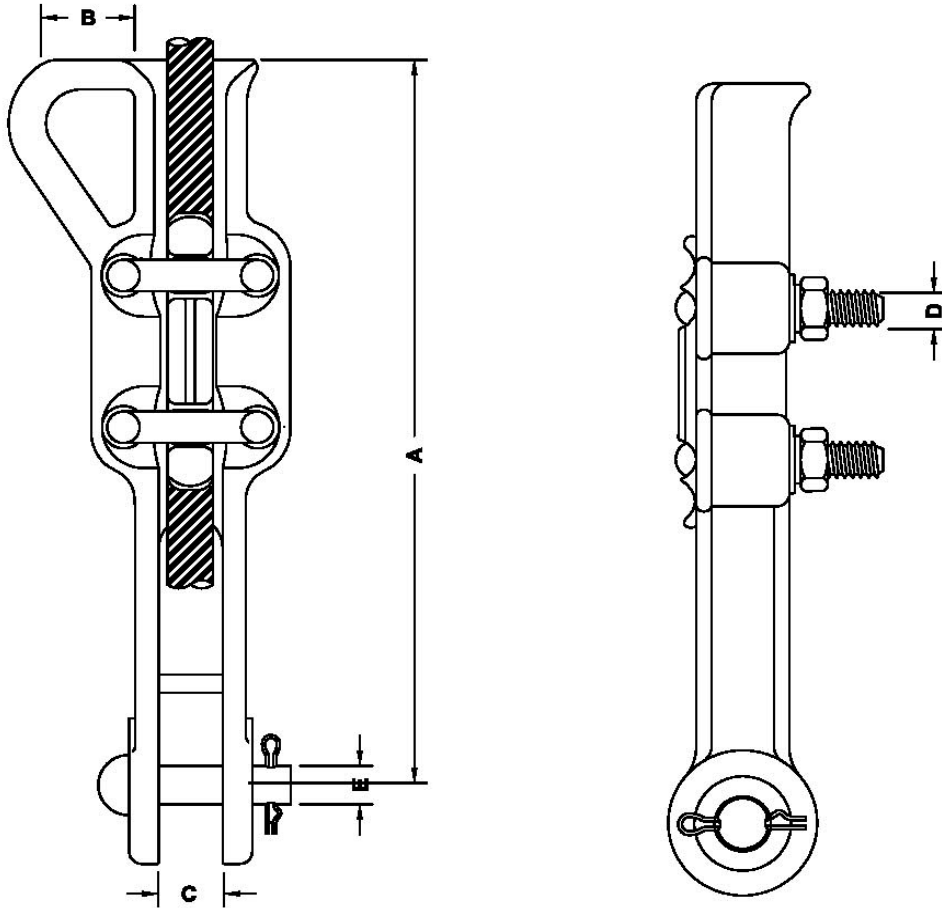


Conductor accessories Straight Line Clamp



Catalog	Range	A	B	C	D	E	UTS KN
SLC-01	6.00-14.00	210	25	19	12.50	16	45
SLC-01	9.00-18.00	210	25	19	14.00	16	45
SLC-03	12.00-20.00	235	28	21	12.00	16	45

Clamp body & keeper	Aluminium alloy
U bolt , nut , cotter & washer	Hot dip galvanized steel
Cotter pin	Stainless steel

The clamps are designed with integral eye for hot stick operations

Other sizes available on request
All dimensions in mm* We reserve the right to change design & construction without prior notice