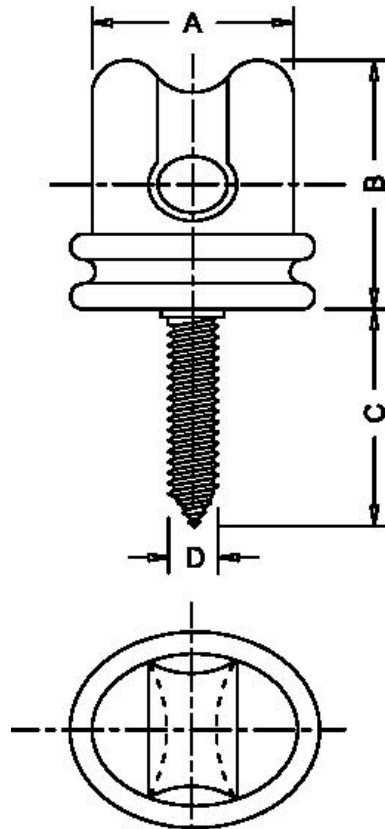


Insulators Coach Screw



CATALOG	A	B	C	D
ICS - 01	64	79	64	10

P.F. withstand voltage :- 8 kv
 Impulse withstand :- 20 kv

Failing loads
 In line with screw :- 4.0 kn
 Lateral pull :- 2.5 kn

Weight :- 0.35 kg approx

The insulators are made of porcelain or nylon composite
 The screw is made of hot dip galvanized steel

ther sizes available on request
 All dimensions in mm * We reserve the right to change design & construction without prior notice