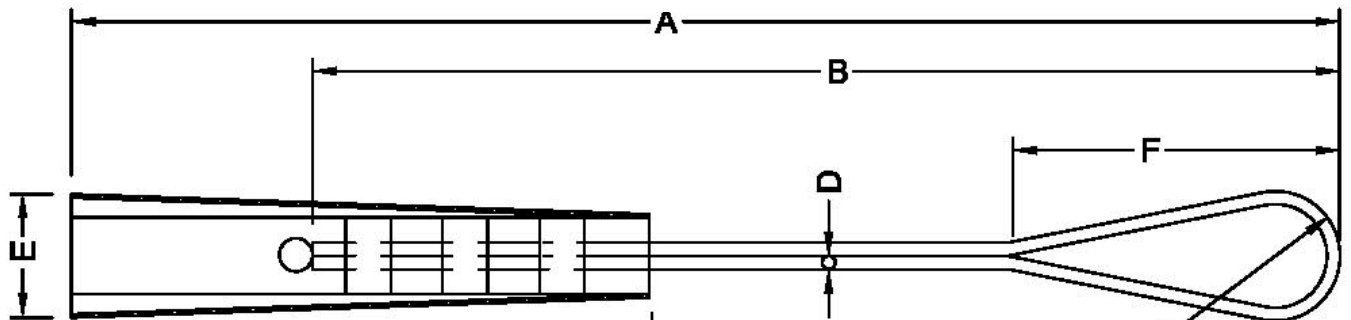
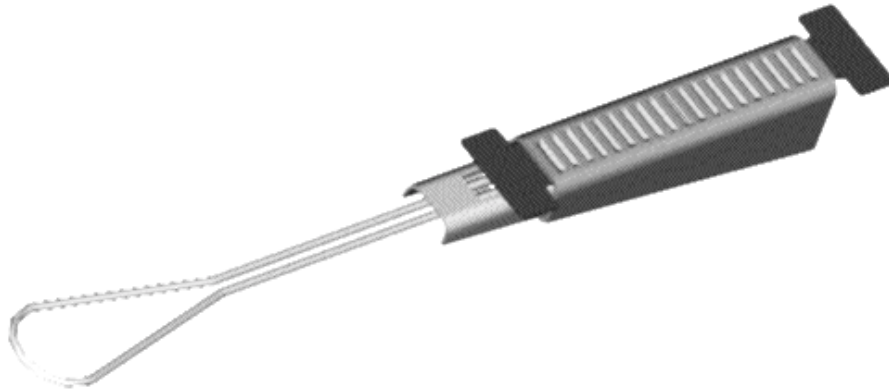


Telecom Accessories Service Drop Wire Clamp



CATALOG	A	B	C	D	E	F	R
SDWC-01	196	148	70	02	14	50	10

Service drop wire clamp consists of:-

- Shell made of stainless steel and serrated
- Wedge with attached tail made of stainless less
- Shim made of polyethylene or equal to induce smoother wedge action

Other sizes available on request
All dimensions in mm * We reserve the right to change design & construction without prior notice